

F.O.I. Compliance – Subject to Board approval

DEEP RIVER BOARD of EDUCATION

Date: January 31, 2024

Budget Workshop I – Deep River Elementary School Library

(To view a recording of this meeting, please visit our website www.reg4.k12.ct.us and select “Remote Meeting Recordings” under the BOARD OF EDUCATION Heading)

Attendance:	<u>Board members</u>		<u>Administration:</u>		<u>Others:</u>
√ = present	Pat Maikowski	√	Brian White	√	
	Robert Ferretti		Robert Grissom	√	
	Lenore Grunko	√	Sarah Brzozowy	√	
	Nick Rioux	√	Josh Torchia	√	
	Joel Harris				
	Alyson Whelan				
	Melissa McIntyre	√			
	Kevin Harris	√			
	Scott Hallden				

Call To Order: approx. 6:00 p.m.

Items/Discussion:

The board reviewed and discussed the proposed Deep River Elementary budget request for 2024-25 (see attached).

There was time for public comment. No comments were made.

The next budget workshop will be held February 13, 2024 @ 6:00 p.m.

ADJOURNMENT:

On motion duly made and seconded, the board unanimously VOTED to adjourn at approx. 7:57 p.m.

Deep River FY 2024-2025 Budget Presentation

Workshop #1

January 31, 2024



Budgetary Considerations FY 2024-2025

- Supporting the District's Five Year Strategic Priorities
- Zero-Based Budgeting
- Contractual Obligations
 - Labor Agreements & Health Insurance
 - Service Contracts - Transportation
- Ongoing Recovery Needs Post-COVID 19 and Maintaining Grant-Funded Positions
 - Student Academic Intervention
 - Student Social Emotional Health Needs
- Economic Factors
 - Utility Costs
 - Consumable Materials, Supply Costs

Deep River Proposed FY 2024-2025 Budget

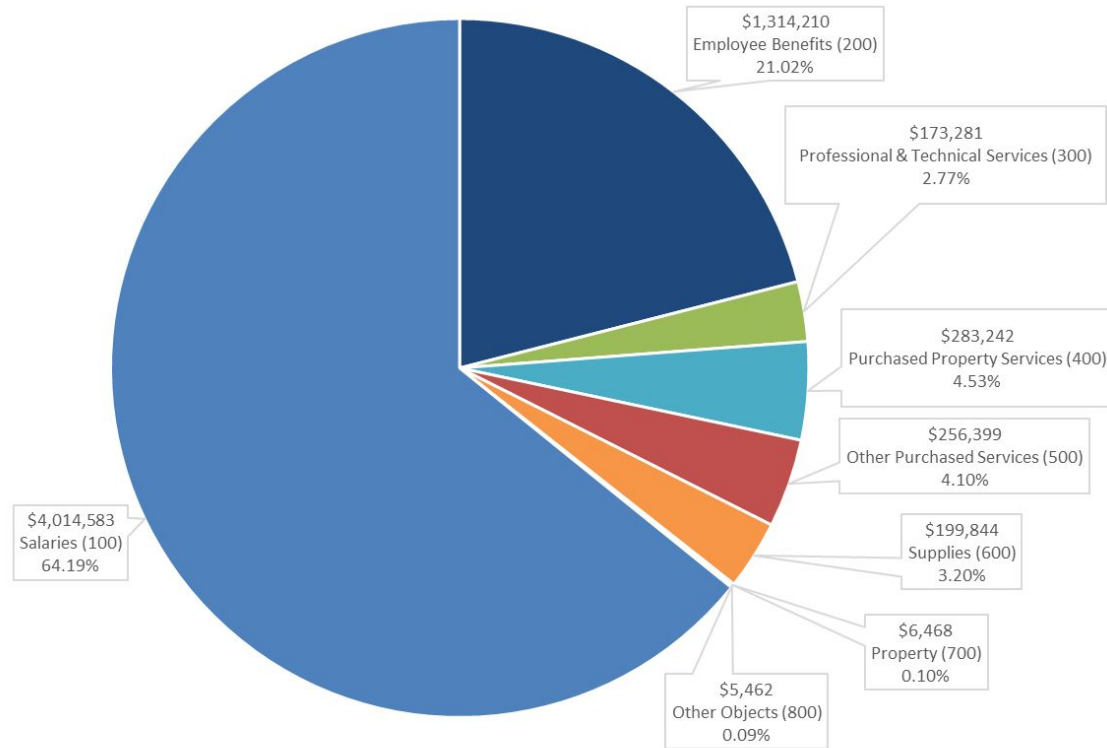
\$6,253,488

4.81%

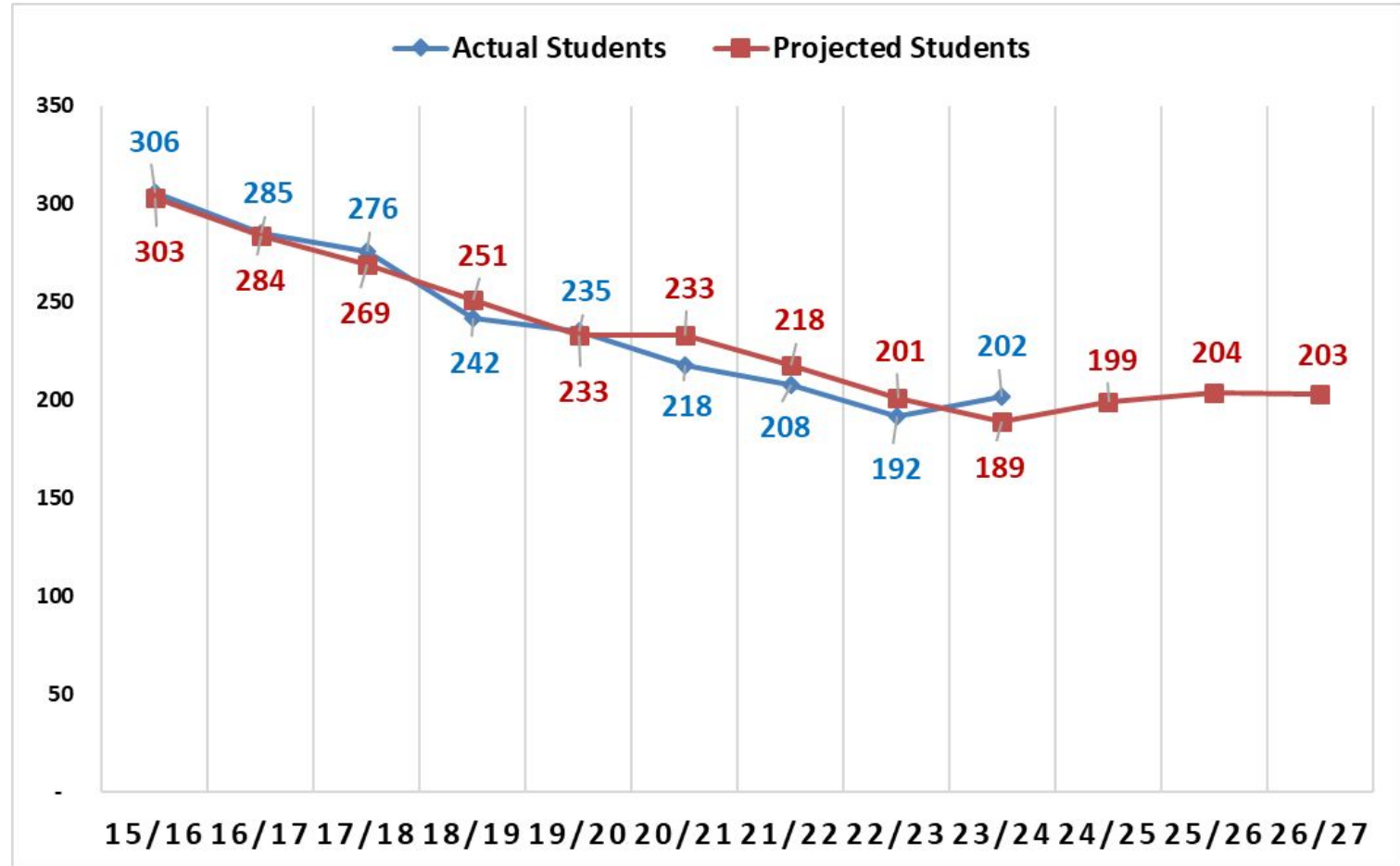
\$287,243

Deep River Proposed FY 2024-2025 Budget - \$6,253,488

2024-2025 Analysis of Requested Budget by Object
Total Requested Budget: \$ 6,253,488



Deep River Enrollment Trends & Projections K-6



Deep River Enrollment Trends & Projections K-6

	2017-2018 (Oct. 1, 2017)	2018-2019 (Oct. 1, 2018)	2019-2020 (Oct. 1, 2019)	2020-2021 (Oct. 1, 2020)	2021-2022 (Oct. 1, 2021)	2022-2023 (Oct. 1, 2022)	2023-2024 (Oct. 1, 2023)	2024-2025 (NESDEC)
K	30	29	34	21	32	27	32	18
1	33	27	28	26	22	30	27	31
2	39	34	23	29	28	26	33	29
3	43	37	37	25	28	27	29	36
4	32	41	37	35	24	24	28	28
5	44	33	42	38	35	22	25	30
6	55	41	34	44	39	36	22	27
Total K-6	276	242	235	218	208	192	196	199

Deep River Class Sections and Sizes

Grade Level	2023-24 (Oct. 1, 2023)	Number of Sections	Class Size (Act. Oct.1, 2023)	2024-25 (NESDEC)	Number of Sections (Est.)	Class Size (Est.)
K	32	2	16/16	18	2	9/9
1	27	2	13/14	31	2	15/16
2	33	2	16/17	29	2	14/15
3	29	2	14/15	36	2	18/18
4	28	2	14/14	28	2	14/14
5	25	2	12/13	30	2	15/15
6	22	2	11/11	27	2	13/14

Summary of Total PreK-6 Educational Expenditures

	2023-2024 Approved	2024-2025 Proposed	% Increase (From PY Total)	\$ Increase
Deep River Elementary School	\$3,979,394	\$4,032,207	1.33%	\$52,813
Deep River Portion of Supervision District	\$1,986,851	\$2,221,281	11.80%	\$234,430
Total Expenditures Deep River PreK-6	\$5,966,245	\$6,253,488	4.81%	\$287,243

Average Daily Membership Calculation for the 2024 / 2025 Budget

■ Average Daily Membership based upon a three-way allocation to the elementary districts

	Chester	Deep River	Essex	Total
Total Students PreK - Grade 6	217	209	277	703
School Year 2024/2025	30.868%	29.730%	39.403%	
School Year 2023/2024	32.312%	28.691%	38.997%	
Change	-1.444%	1.039%	0.405%	

■ Average Daily Membership based upon a four-way allocation to the districts

	Chester	Deep River	Essex	Region 4	Total
Total Students PreK - Grade 12	217	209	277	725	1,428
School Year 2024/2025	15.196%	14.636%	19.398%	50.770%	
School Year 2023/2024	15.772%	14.004%	19.039%	51.185%	
Change	-0.576%	0.632%	0.359%	-0.415%	

Major Budget Drivers & Cost Savings FY 2024-2025

Contractual Changes

- Salary & Benefit Cost Increases
- Transportation
- Electricity Costs

New Initiatives

- Need Based Staff Requests - Supervision
- Full Day PreK Expansion - Supervision
- Technology Platforms & Software for Students, Families, and Staff - Supervision
- District-Wide Studies & Consultations - Supervision
- Indoor Air Quality Inspections

Cost Savings

- Change in Health Plan Participation

Deep River Elementary School New Staffing Requests 2024-2025

School Psychologist - *Supervision District Allocation*

- 0.5 FTE
- Budget Request = \$40,096
- Retain current 1.0 FTE staff position partially funded through ESSER Grant

Deep River Elementary School Inflationary Considerations

- Supervision District will execute a new transportation agreement July 1, 2024
 - Assuming price increase of 12.5% per legal guidance
- Electricity rates increased 60%
- Water rates estimated to increase
- General office supplies, maintenance supplies, school supplies, and instructional materials increasing 10% - 25% based on current pricing

PreK Program Expansion to Full Day - *Supervision District*

- Full Day Pre-K Program presented to [Joint Boards of Education October 2022](#) and requested in 2023-2024 Supervision District Budget

Current

- Students from Chester, Deep River and Essex
- Tuition expected for community students
- Inability to accept all applicants due to current structure
- 2.5 hour sessions (AM/PM; 4 days per week)
- Adhering to the CT Early Learning Developmental Standards
- Individual tutoring for repetition and pre-teaching purposes
- Focus on language, literacy, Bridges math.
- Groups: Motor group, Community Music School, social skills groups & phonemic awareness groups
- Playground, science or free play as time allows
- Activities of daily living: Snack, dressing, toileting, manage belongings and self care

Proposal

- 4 days per week Full day sessions
- Tuition expected for community students
- Open opportunities for more families
- Further adhering to the CT Early Learning Developmental Standards
 - Science / Social Studies / Creative Arts
- Stronger foundational skills in language, literacy, math
- Improved physical health and attendance
- Increased social and emotional development
- Increased parental involvement
- Relaxed and unhurried school day
- Fewer transitions
- In-depth, culturally diverse explorations
- Varied experiences
- Access to community resources and linkages
- Align to the current landscape of Pre-K programs in our area

PreK Program Expansion to Full Day - *Supervision District*

- With current closures of early childhood programs in our region, opportunity to provide a quality program to children and families
- Early Intervention / School Readiness studies
- Equity opportunity for families to participate with full day (no before/after care options)
- Opportunity to provide quality programming for all children if tuition is nonexistent
- Increased preparation for Kindergarten in all domains
- Equity to reduce the achievement gap
- Increased scores on high stakes assessments
- Increased social and emotional readiness for school
- Increased “learning to learn” skills
- Increased understanding of diversity and inclusion
- Acceptance of individual differences
- Additional unbudgeted staff requests during the year for “Birth to 3” referrals
- Exceeding 50% threshold special education / regular education students in classes

PreK Program Expansion to Full Day - *Supervision District*

- FY 2024-2025 would be Year 1 of a proposed 3-Year Rollout
 - Current Pre-K half-day cohorts (AM / PM) become two full-day cohorts
 - No year-over-year change in the anticipated number of students served
- FY 2025-2026 (Year 2): Add 2 additional cohorts, 4 classrooms total
- FY 2026-2027 (Year 3): Add necessary classrooms to achieve Universal PreK

PreK Program Expansion to Full Day - *Supervision District*

- Requires addition of +1 Certified Teacher, +1 Paraeducator, Supplies

1.0 Certified Staff (Salary + Benefits)	\$106,589	(\$71,189 + \$35,400)
1.0 Non-Certified Staff (Salary + Benefits)	\$40,887	(\$27,409 + \$13,478)
Supplies & Inst. Materials		<u>\$1,900</u> (utilize existing furniture)
Total Estimated Cost =		\$149,376

Additional PreSchool & PreK Supporting Information

- Preschool (3 year-old) program
 - Enrollment by June '23 = 30
 - Preschool program tuition cost for non-identified students = \$1,500
- PreK (4 year-old) program
 - Enrollment = 21
 - PreK program tuition cost for non-identified students = \$2,000

Current assumption is no change to peer tuition rates

Additional PreK Supporting Information

PreK Comparison to Neighboring Districts	Tuition	Universal / Lottery
Clinton	Sliding scale	Lottery
Cromwell	Sliding scale	Lottery
East Lyme	\$1,910 / year	Lottery
Madison	\$7,320 full day / year	Lottery
Old Saybrook	None	Universal
Region 17 (Haddam-Killingworth)	\$1,500 / year	Lottery
Region 18 (Lyme/Old Lyme)	None	Universal
Westbrook	None	Universal

Facilities Director Request - *Supervision District*

- Primary Responsibilities:
 - Oversees Facility & Maintenance operations and needs of entire District
 - Coordinates with building based facilities staff, Principals, and Central Office
 - Assist Building Administrators in the oversight of custodial staff at each building, including head custodians
 - Liaison with town maintenance departments and various facility committees
 - Directly responsible for overseeing compliance with Federal, State, & local reporting requirements (Air Quality, radon, All-Hazards, water, asbestos, etc.)
 - Vendor & Supplier coordination, including facility RFP needs for all schools, consolidating service & maintenance contracts, and creating purchasing efficiencies
 - Support / coordinate District security initiatives (security audit, facility hardening, building management systems)
 - Support District Transportation services

Facilities Director Request - *Supervision District*

- December 2023 CASBO Query of Districts with Facilities Director in 2023-2024:
 - Average Director salary was \$120,659
 - Similar sized Districts (4-6 buildings, 300,000-500,000 sqft)
 - Average Director Salary was \$126,000
- Based on the survey results, required skill set to excel in this role, and complexities of this system, suggest offering a starting salary of **\$141,385** + benefits of **\$36,465**
 - Previous Region 4 position received salary of \$129,000 in 2019-2020
 - Potential offsets over time would be realized through: coordinating purchasing processes to reduce maintenance repairs and supplies costs; reducing need for outside service providers to oversee large District projects (“Clerk of the Works”); reducing exposure to the District for compliance issues; and ability to act on operational needs more timely

Facilities Director Request - Cost Share Comparison

Total estimated Salary + Benefits = \$177,850

<u>Cost Allocation - Region 4 Position</u>	<u>Chester</u>	<u>Deep River</u>	<u>Essex</u>	
	23.59%	36.55%	39.86%	
TOTAL BY TOWN - Region 4 Position	\$ 41,955	\$ 65,004	\$ 70,891	

<u>Cost Allocation - Supervision District Position</u>	<u>Chester</u>	<u>Deep River</u>	<u>Essex</u>	<u>Region 4</u>
	15.20%	14.64%	19.40%	50.77%
	\$ 27,026	\$ 26,030	\$ 34,499	\$ 90,295
<u>Allocation of Region 4 Portion to Three Towns</u>	<u>Chester</u>	<u>Deep River</u>	<u>Essex</u>	
	23.59%	36.55%	39.86%	
	\$ 21,301	\$ 33,003	\$ 35,992	
TOTAL BY TOWN - Supervision District Position	\$ 48,327	\$ 59,033	\$ 70,490	

Difference	\$ (6,372)	\$ 5,971	\$ 401	
	-3.58%	3.36%	0.23%	

If not in Supervision District, position cannot support District-wide security efforts, transportation services, or any initiatives involving Elementary Schools

Deep River Elementary School - Capital Requests FY 2024-2025

Updated 1/31/2024

<i>Amount Requested:</i>	<i>Object</i>	<i>School Year 2024-2025</i>
Music Riser & Storage Cart	5700	\$ 3,064
Studio Piano	5700	\$ 8,199
Classroom Furniture <i>Bookshelves</i> <i>Desks - Grade 3</i> <i>Mailbox Cubbies</i> <i>Carpets</i>	5700	\$ 9,271
Library Circulation Desk	5700	\$ 7,500
Total		\$ 28,034

Deep River Budget Timeline & Next Steps

- January 31, 2024 (Today) - Deep River Budget Workshop #1
- February 5, 2024 - Supervision District Budget Workshop #3
- February 12, 2024 - Supervision District Public Budget Meeting
- February 13, 2024 - Deep River Budget Workshop #2
- March 18, 2024 - Deep River Budget Workshop #3
- March 21, 2024 - Deep River BOE Meeting - Possible Vote to Approve 2024-2025 Deep River Budget for Presentation to Town
- TBD - Present Deep River BOE 2024-2025 Budget to Deep River BOF/BOS
- TBD - Present Deep River BOE 2024-2025 Budget at Public Hearing at Town Hall
- TBD - Deep River Town Budget Vote
- May 16, 2024 - Deep River BOE Meeting

DEEP RIVER SCHOOL DISTRICT

Deep River Elementary School

2024-2025 Proposed Budget

***Deep River Board of Education
Budget Workshop #1 - Wednesday, January 31, 2024***



A Mission-Driven Learning Community with a PK-12 Line of Sight

Pat Maikowski, Chair - Deep River Board of Education
Brian J. White, Superintendent of Schools
Christen Papallo, Director of Pupil Services

Sarah Brzozowy, Ed.D, Assistant Superintendent
Josh Torchia, Principal
Robert Grissom, Finance Director



Regional School District 4
Chester - Deep River - Essex - Region 4

2024-2025 Proposed Budget

DEEP RIVER SCHOOL DISTRICT

TABLE OF CONTENTS	PAGE
Deep River Elementary School	3
Mission and Strategic Goals	4
Deep River Elementary School Enrollment	5 - 6
Budget Summary Pie Chart	7
Budget Summary and Detail	8 - 13
Staffing Analysis	14 - 15



Regional School District 4 ***Chester - Deep River - Essex - Region 4***

2024-2025 School Year Budget Request

DEEP RIVER SCHOOL DISTRICT

The Deep River School District is part of a system of schools comprising the Chester, Deep River, Essex, and Region 4 school districts. The districts are governed by multiple Boards of Education and administered under the auspices of the Supervision District agreement. The Boards of Education are committed to providing a rigorous, challenging, and cohesive educational program with a PK-12 line of sight.

Deep River Elementary School

Deep River Elementary School The Deep River Elementary School is the only elementary school in the town of Deep River, Connecticut. The Deep River Elementary School has the charm of a small New England school. The school population consists of students from kindergarten through sixth grade. The main section of the school is housed in the original building, which previously served as the Deep River High School, which was completed in 1914. The building became an elementary school in 1952. Additions were made to the building in 1960 and 1971. The final renovation occurred in 1997 when a new gymnasium was added and the building was upgraded to meet all ADA (Americans with Disabilities Act) requirements.

The Deep River Elementary School continues to place an emphasis on improving student achievement. The staff has continued to focus their efforts on the implementation of the school wide action plans, which were developed as part of our school improvement plan. The goals focused on math as well as reading comprehension.

Priorities have also included updating curricula, maintaining small class sizes, and expanding opportunities for staff to collaborate and review student work. A new master schedule has been developed which allows for more time for the professional staff to collaborate, analyze data, and share student work. Over the past few years, significant funds have been made available to us to upgrade our library collection. Our flexible library schedule resulted in an increased level of team teaching between our librarian and classroom teachers.

The School Improvement Team Steering Committee developed a parent questionnaire, which was distributed to parents and reviewed by the team. Topics included academic rigor, communication, social development, safety, climate, recess, and lunch. A separate questionnaire was developed for the students.

Over the years, Deep River Elementary School has received enormous support from the community at large. School budgets have been supported which have allowed for small class sizes, curriculum expansion, and technology upgrades. The dedicated staff along with the support of the parent community has served, as a successful partnership for meeting the academic, social and emotional needs of the children.



Regional School District 4
Chester - Deep River - Essex - Region 4

2024-2025 School Year Budget Request

DEEP RIVER SCHOOL DISTRICT

FIVE YEAR STRATEGIC PRIORITIES 2023-2028

The Chester, Deep River, Essex, and Regional School District No. 4 Boards of Education are presently engaged in a process to develop a set of Strategic Priorities which will guide the work of our schools for the 2023-2028 school years. While the Strategic Plan remains in development with the Boards of Education of Chester, Deep River, Essex, Regional School District No. 4, and the Supervisions District Committee, the agreed upon priorities are:

1. Teaching and Learning: To provide each student with high quality classroom instruction to promote successful student outcomes.
2. Culture and Climate: To partner with students, staff, and families to maintain a positive learning environment where every child is successful.
3. Finance and Operations: Develop and implement practices to ensure effective long-range, strategic financial and operational planning.



Regional School District 4 Chester - Deep River - Essex - Region 4

2024-2025 School Year Budget Request

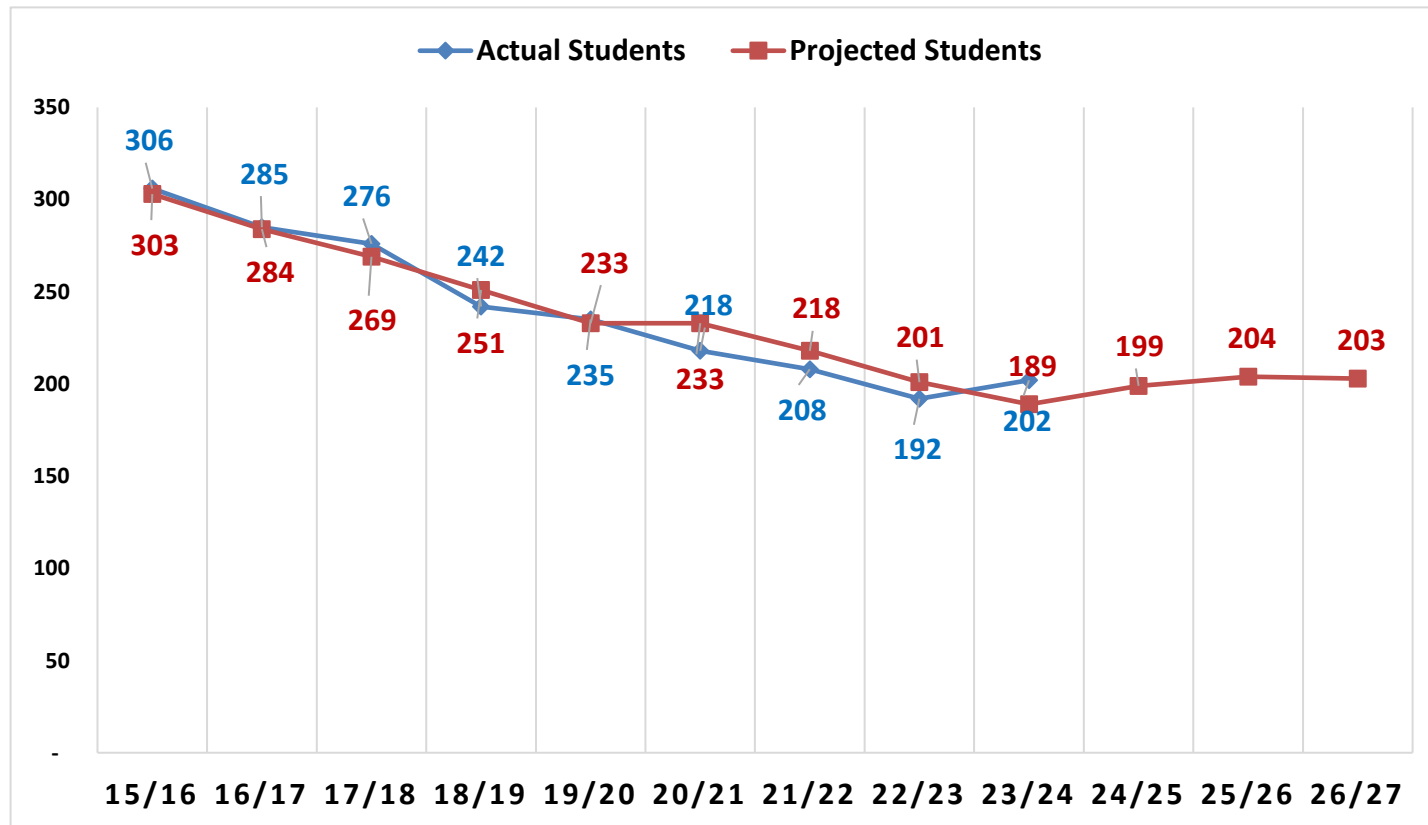
DEEP RIVER SCHOOL DISTRICT

Deep River Elementary School

Enrollment and Projections (Grades K-6)

2015/16 through 2026/27

(enrollment based upon SDE October 1 census PSIS report)



*Pete Prowda projections used for years 14/15 through 18/19

* Principal's projections used for year 19/20

* NESDEC study for projections for 20/21-25/26



Regional School District 4
Chester - Deep River - Essex - Region 4

2024-2025 School Year Budget Request

DEEP RIVER SCHOOL DISTRICT

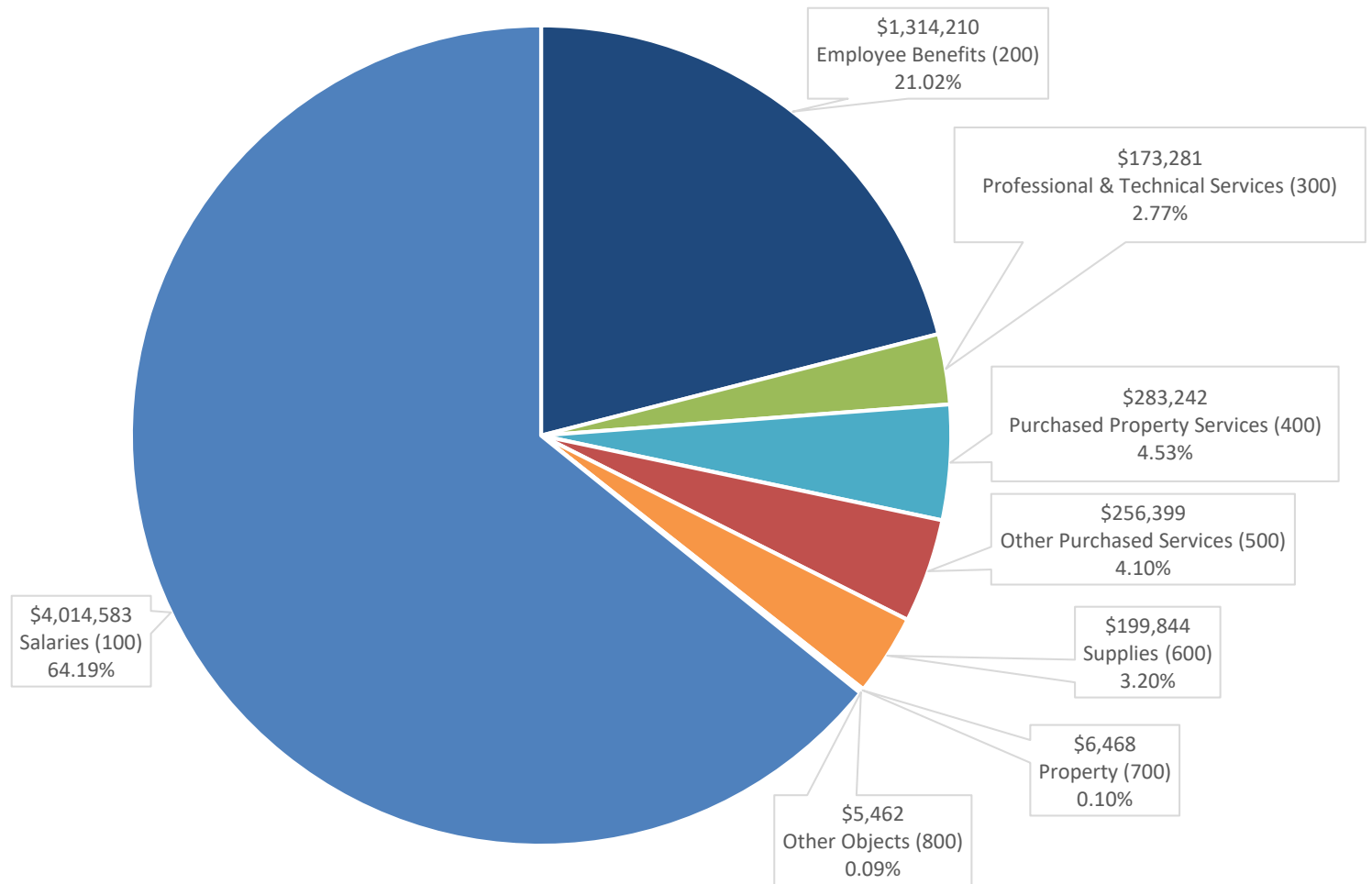
Deep River Elementary School Enrollment and Projections

	K	1	2	3	4	5	6	TOTAL	SECTIONS	CLASS SIZE
2019/20	34	28	23	37	37	42	34	235	14	16.8
2020/21	21	26	29	25	35	38	44	218	14	15.6
2021/22	32	22	28	28	24	35	39	208	14	14.9
2022/23	27	30	26	27	24	22	36	192	14	13.7
2023/24	32	28	35	29	30	26	22	202	14	14.4
Projected										
2024/25**	18	31	29	36	28	30	27	199	14	14.2

****Note:** *all actual figures based on October 1st PSIS census report for resident students*
all projections based on NESDEC Study

Deep River Elementary School
Requested Budget for School Year 2024-2025

2024-2025 Analysis of Requested Budget by Object
Total Requested Budget: \$ 6,253,488



Deep River Elementary School
Requested Budget for School Year 2024-2025

BUDGET SUMMARY EXPENDITURES BY OBJECT CODE	2021-2022	2021-2022	2022-2023	2022-2023	2023-2024	2024-2025	% Change over 23/24	\$ Change over 23/24	Object Description
	Approved Budget	Actual Expenses	Approved Budget	Actual Expenses	Approved Budget	Requested Budget			
Salaries (100)	3,609,213	3,587,348	3,711,414	3,675,321	3,785,324	4,014,583	6.06%	229,259	Includes regular and extra compensatory wages for employees
Employee Benefits (200)	1,198,264	1,187,048	1,193,877	1,179,861	1,224,568	1,314,210	7.32%	89,642	Contractual Benefits for employees including medical, life insurance, annuities and FICA/Medicare.
Professional & Technical Services (300)	119,092	111,166	136,600	112,032	145,185	173,281	19.35%	28,096	Primarily legal, consulting, rehabilitative, and professional development services performed by outside contractors.
Purchased Property Services (400)	274,759	251,745	252,323	245,812	258,549	283,242	9.55%	24,693	Expenditures from these accounts are used for upkeep and repairs of school buildings and equipment.
Other Purchased Services (500)	229,098	202,553	214,691	195,377	220,867	256,399	16.09%	35,532	Expenditures from these accounts are used primarily for out-of-district transportation, communications, out of district tuition, travel, and conferences.
Supplies (600)	142,406	146,495	171,481	160,230	173,710	199,844	15.04%	26,134	Includes supplies, materials, textbooks, utilities such as heating fuel.
Property (700)	0	0	4,050	3,542	724	6,468	793.37%	5,744	Funds from these accounts are used for new and replacement equipment.
Other Objects (800)	4,973	4,601	5,077	4,543	5,120	5,462	6.68%	342	These accounts are used to budget for professional memberships.
TOTAL	5,577,805	5,490,955	5,689,512	5,576,717	5,814,047	6,253,488			
Additional Appropriation					152,198				
GRAND TOTAL	5,577,805	5,490,955	5,689,512	5,576,717	5,966,245	6,253,488			

Change Over } **4.81%**
\$287,243

Deep River Elementary School
Requested Budget for School Year 2024-2025

Object	Description	2021-2022 Approved Budget	2021-2022 Actual Expenses	2021-2022 Surplus (Deficit)	2022-2023 Approved Budget	2022-2023 Actual Budget	2022-2023 Surplus (Deficit)	2023-2024 Approved Budget	2024-2025 Requested Budget	% Change Over 23/24 Budget	\$ Change Over 23/24 Budget
OBJECT 100 - SALARIES:											
5111	School Administration Salary	155,652	159,988	(4,336)	159,543	146,580	12,963	156,648	169,259	8.05%	12,611
5113	Teachers Salaries	1,301,766	1,305,959	(4,193)	1,353,175	1,337,844	15,330	1,411,086	1,465,373	3.85%	54,287
5114	Secretary Salaries	105,038	109,102	(4,064)	110,214	111,467	(1,253)	114,766	119,271	3.93%	4,505
5115	Custodian Salaries	165,850	169,379	(3,529)	174,368	176,551	(2,183)	179,684	188,870	5.11%	9,186
5116	Nurse Salary	53,847	62,031	(8,184)	55,267	60,930	(5,663)	57,292	59,610	4.05%	2,318
5118	Food Service Administrator Salary	16,017	14,271	1,746	16,228	43,732	(27,504)	16,910	17,502	3.50%	592
5118	Food Service Bookkeeper Salary	5,999	5,748	251	6,648	0	6,648	6,924	7,262	4.88%	338
5118	Cafeteria Salary	37,060	47,233	(10,173)	41,107	23,010	18,097	43,896	48,553	10.61%	4,657
5119	Para Educators Salaries	273,779	251,473	22,306	287,523	288,019	(496)	308,012	333,409	8.25%	25,397
5123	Substitute Teachers Salary	47,619	28,607	19,012	46,800	33,551	13,249	111,245	113,045	1.62%	1,800
5124	Substitute Secretary/Para-Educators/Cust	4,000	3,946	54	4,000	2,473	1,527	4,000	4,000	0.00%	0
5133	Coaches/Mentor/Extra-Curricular Salary	32,576	16,947	15,629	30,205	23,479	6,727	29,426	29,257	-0.57%	(169)
5134	Board Of Education Clerk/Secretary OT	600	1,509	(909)	600	1,809	(1,209)	0	600	100.00%	600
5135	Custodian Overtime	3,000	4,744	(1,744)	3,100	17,704	(14,604)	3,100	3,100	0.00%	0
5198	Supervision District	1,406,410	1,406,410	0	1,422,637	1,408,172	14,465	1,342,335	1,455,472	8.43%	113,137
TOTAL SALARIES		3,609,213	3,587,348	21,866	3,711,414	3,675,321	36,093	3,785,324	4,014,583	6.06%	229,259
OBJECT 200 - EMPLOYEE BENEFITS:											
5210	Health Insurance	652,708	652,708	0	652,708	652,708	0	666,689	658,335	-1.25%	(8,354)
5212	Appropriation: Health Insurance Reserve	20,571	20,571	0	0	0	0	0	0	100.00%	0
5214	Life Insurance	2,925	3,036	(111)	3,039	2,987	52	3,499	3,481	-0.51%	(18)
5223	FICA/Medicare	66,959	75,903	(8,944)	69,000	74,146	(5,146)	82,504	78,812	-4.47%	(3,692)
5250	Unemployment Compensation	5,000	151	4,849	5,000	39	4,962	5,000	5,000	0.00%	0
5260	Worker's Compensation	15,517	15,273	244	16,900	16,184	716	16,900	16,900	0.00%	0
5290	Other Employee Benefits	67,115	52,108	15,007	71,440	96,115	(24,675)	65,905	107,756	63.50%	41,851
5291	Annuities	2,512	2,339	173	2,600	2,740	(140)	3,456	4,421	27.92%	965
5298	Supervision District	364,958	364,958	0	373,190	334,941	38,249	380,615	439,505	15.47%	58,890
TOTAL EMPLOYEE BENEFITS		1,198,264	1,187,048	11,217	1,193,877	1,179,861	14,016	1,224,568	1,314,210	7.32%	89,642

Deep River Elementary School
Requested Budget for School Year 2024-2025

Object	Description	2021-2022 Approved Budget	2021-2022 Actual Expenses	2021-2022 Surplus (Deficit)	2022-2023 Approved Budget	2022-2023 Actual Budget	2022-2023 Surplus (Deficit)	2023-2024 Approved Budget	2024-2025 Requested Budget	% Change Over 23/24 Budget	\$ Change Over 23/24 Budget
OBJECT 300 - PURCHASED & TECHNICAL SERVICES:											
5322	Professional Development										
	1190 Professional Development										
	1210 School-Wide Enrichment Program	5,888	645	5,243	4,864	4,516	348	5,375	4,275	-20.47%	(1,100)
	2213 Staff Training	0	0	0	0	0	0	0	0	100.00%	0
	2213 Teacher Course Reimbursement	7,050	4,383	2,667	23,376	4,545	18,831	35,820	32,600	-8.99%	(3,220)
	TOTAL PROFESSIONAL DEVELOPMENT	12,938	5,028	7,910	28,240	9,061	19,179	41,195	36,875	-10.49%	(4,320)
5330	Other Professional Services										
	2134 Health	400	0	400	400	0	400	400	400	0.00%	0
	2135 Testing & Therapy	23,997	23,507	490	24,419	20,532	3,887	17,106	17,596	2.86%	490
	Building Study	7,358	0	7,358	0	0	0	0	0	100.00%	0
	2310 BOE / Legal and Audit	25,000	33,232	(8,232)	25,000	29,897	(4,897)	27,500	32,500	18.18%	5,000
	TOTAL OTHER PROFESSIONAL SERVICES	56,755	56,739	16	49,819	50,429	(610)	45,006	50,496	12.20%	5,490
5398	Supervision District	49,399	49,399	0	58,541	52,541	6,000	58,984	85,910	45.65%	26,926
TOTAL PURCHASED & TECHNICAL SERVICES		119,092	111,166	7,926	136,600	112,032	24,569	145,185	173,281	19.35%	28,096
OBJECT 400 - PURCHASED PROPERTY SERVICES:											
5411	Water	6,500	6,042	458	6,500	6,335	165	6,200	6,400	3.23%	200
5412	Electricity	42,642	48,164	(5,522)	45,451	41,336	4,115	49,000	62,815	28.19%	13,815
5413	Town Energy Efficiency Project Loan	26,733	26,000	733	26,733	26,000	733	26,000	26,000	0.00%	0
5430	Repairs & Maintenance										
	1101 Art	0	0	0	60	61	(1)	0	150	100.00%	150
	1108 Mathematics	0	0	0	0	0	0	800	0	-100.00%	(800)
	1109 Music	1,600	1,599	1	1,600	1,578	22	2,875	2,100	-26.96%	(775)
	1207 Technology	2,500	1,827	673	0	0	0	3,000	6,500	116.67%	3,500
	2134 Health	80	80	0	90	75	15	2,785	85	-96.95%	(2,700)
	2222 Library Media Center	495	511	(16)	495	0	495	495	0	-100.00%	(495)
	2223 Audio Visual	0	0	0	0	0	0	0	857	100.00%	857
	2410 Principal's Office	400	0	400	1,000	0	1,000	0	1,000	100.00%	1,000
	2600 Security	800	575	225	2,265	625	1,640	2,000	250	-87.50%	(1,750)
	2600 Plant Operations	100,261	93,829	6,433	102,137	94,848	7,289	97,205	106,326	9.38%	9,121
	TOTAL REPAIRS & MAINTENANCE	106,136	98,420	7,716	107,647	97,187	10,460	109,160	117,268	7.43%	8,108
5440	Leases	88,000	68,371	19,629	62,299	71,640	(9,341)	64,100	65,456	2.12%	1,356
5498	Supervision District	4,748	4,748	0	3,693	3,315	378	4,089	5,303	29.68%	1,214
TOTAL PURCHASED PROPERTY SERVICES		274,759	251,745	23,014	252,323	245,812	6,510	258,549	283,242	9.55%	24,693

Deep River Elementary School
Requested Budget for School Year 2024-2025

Object	Description	2021-2022 Approved Budget	2021-2022 Actual Expenses	2021-2022 Surplus (Deficit)	2022-2023 Approved Budget	2022-2023 Actual Budget	2022-2023 Surplus (Deficit)	2023-2024 Approved Budget	2024-2025 Requested Budget	% Change Over 23/24 Budget	\$ Change Over 23/24 Budget
OBJECT 500 - OTHER PURCHASED SERVICES:											
5511	Out-of-District Transportation										
1270	Out-of-District Transportation	0	0	0	0	0	0	0	0	100.00%	0
1270A	Excess Cost Reimb.	0	0	0	0	0	0	0	0	100.00%	0
	TOTAL OUT OF DISTRICT TRANSPORT	0	0	0	0	0	0	0	0	100.00%	0
5515	Field Trips	5,050	109	4,941	7,897	7,586	311	6,046	8,304	37.35%	2,258
5520	Comprehensive Insurance	41,989	20,624	21,365	22,850	19,747	3,103	22,850	20,000	-12.47%	(2,850)
5530	Communications	7,500	7,826	(326)	6,427	10,067	(3,640)	6,427	10,808	68.17%	4,381
5540	Advertising	0	0	0	500	0	500	500	500	0.00%	0
5561	Tuition										
1270	Out-of-District Tuition	0	0	0	0	0	0	0	0	100.00%	0
1270A	Excess Cost Reimb.	0	0	0	0	0	0	0	0	100.00%	0
	TOTAL TUITION	0	0	0	0	0	0	0	0	100.00%	0
5580	Travel & Conference										
2134	Health	250	145	105	250	0	250	300	300	0.00%	0
2213	Staff Training Services	880	1,245	(365)	3,336	2,223	1,113	1,890	2,130	12.70%	240
4101	Administrator	1,000	175	825	1,000	996	4	1,000	2,000	100.00%	1,000
	TOTAL TRAVEL & CONFERENCES	2,130	1,390	740	4,586	3,219	1,368	3,190	4,430	38.87%	1,240
5598	Supervision District	172,429	172,429	0	172,431	154,758	17,673	181,854	212,357	16.77%	30,503
TOTAL OTHER PURCHASED SERVICES		229,098	202,553	26,545	214,691	195,377	19,315	220,867	256,399	16.09%	35,532

Deep River Elementary School
Requested Budget for School Year 2024-2025

Object	Description	2021-2022 Approved Budget	2021-2022 Actual Expenses	2021-2022 Surplus (Deficit)	2022-2023 Approved Budget	2022-2023 Actual Budget	2022-2023 Surplus (Deficit)	2023-2024 Approved Budget	2024-2025 Requested Budget	% Change Over 23/24 Budget	\$ Change Over 23/24 Budget
OBJECT 600 - SUPPLIES:											
5610	General Supplies	9,680	8,897	783	10,150	10,516	(366)	10,890	12,255	12.53%	1,365
5610	BOE Staff Recognition Materials	0	0	0	0	0	0	0	1,500	100.00%	1,500
5611	Instructional Materials:										
1101	Art	4,590	4,448	142	3,924	3,785	139	4,167	4,553	9.26%	386
1103	Language Arts	2,388	2,369	19	3,283	3,283	0	2,807	3,737	33.13%	930
1104	Foreign Language (FLES)	193	68	124	193	193	0	200	416	108.00%	216
1107	Kindergarten	989	977	12	1,384	1,154	230	1,692	1,350	-20.21%	(342)
1108	Mathematics	7,039	7,005	35	5,688	5,127	561	6,391	15,618	144.37%	9,227
1109	Music	1,540	1,399	141	248	247	1	1,930	2,063	6.89%	133
1110	Physical Education	2,015	554	1,461	1,520	1,525	(5)	2,250	0	-100.00%	(2,250)
1111	Reading	8,505	8,385	120	16,690	16,315	375	22,818	12,759	-44.08%	(10,059)
1112	Science	2,687	2,613	74	2,157	2,127	30	3,023	2,691	-10.98%	(332)
1113	Social Studies	3,310	3,031	280	1,892	1,817	75	1,450	3,753	158.84%	2,303
1207	Technology	7,168	5,483	1,685	11,514	9,852	1,662	11,459	11,272	-1.63%	(187)
1190	General Instruction	12,500	11,738	762	12,500	11,966	534	12,500	12,000	-4.00%	(500)
1210	Extracurricular Activities	0	0	0	0	0	0	0	1,425	100.00%	1,425
1215	Special Education	2,474	2,455	19	1,816	1,550	266	3,437	6,489	88.80%	3,052
2134	Health	2,300	1,747	553	1,600	1,210	390	2,405	4,751	97.55%	2,346
2222	Library	950	842	108	1,150	1,152	(2)	730	1,360	86.30%	630
2223	Audio Visual	712	712	0	772	713	59	780	857	9.87%	77
	TOTAL INSTRUCTIONAL MATERIALS	59,359	53,824	5,536	66,331	62,016	4,315	78,039	85,095	9.04%	7,056
5613	Operations Maintenance Supplies	10,323	10,324	(1)	11,775	11,175	600	11,775	11,775	0.00%	0
5624	Natural Gas	27,500	38,772	(11,272)	37,500	35,444	2,056	37,000	37,000	0.00%	0
5640	Periodicals	347	233	114	347	132	215	276	310	12.32%	34
5641	Textbooks & Workbooks										
1103	Language Arts	0	0	0	0	0	0	500	0	-100.00%	(500)
1108	Mathematics	350	190	160	1,223	0	1,223	80	1,450	1712.50%	1,370
1109	Music	0	0	0	1,395	1,397	(2)	500	0	-100.00%	(500)
1111	Reading	9,500	9,494	6	14,876	14,699	177	46	17,890	38791.30%	17,844
1112	Science	0	0	0	0	0	0	4,172	0	-100.00%	(4,172)
1113	Social Studies	0	0	0	0	0	0	1,566	1,420	-9.32%	(146)
1215	Special Education	0	0	0	3,453	2,880	573	1,713	0	-100.00%	(1,713)
	TOTAL TEXTBOOKS & INSTRUCTION M	9,850	9,684	166	20,947	18,976	1,971	8,577	20,760	142.04%	12,183
5642	Library & Professional Books	9,263	8,678	585	9,663	8,719	944	9,649	9,975	3.38%	326
5698	Supervision District	16,084	16,084	0	14,768	13,253	1,514	17,504	21,175	20.97%	3,671
TOTAL SUPPLIES		142,406	146,495	(4,089)	171,481	160,230	11,250	173,710	199,844	15.04%	26,134

Deep River Elementary School
Requested Budget for School Year 2024-2025

Object	Description	2021-2022 Approved Budget	2021-2022 Actual Expenses	2021-2022 Surplus (Deficit)	2022-2023 Approved Budget	2022-2023 Actual Budget	2022-2023 Surplus (Deficit)	2023-2024 Approved Budget	2024-2025 Requested Budget	% Change Over 23/24 Budget	\$ Change Over 23/24 Budget
OBJECT 700 - PROPERTY:											
5730	Equipment										
1101	Art	0	0	0	3,202	2,796	406	0	1,577	100.00%	1,577
1107	Kindergarten	0	0	0	448	308	140	0	1,647	100.00%	1,647
1109	Music	0	0	0	0	0	0	0	0	100.00%	0
1110	Physical Education	0	0	0	0	0	0	0	1,470	100.00%	1,470
1190	General Instructional Equipment	0	0	0	400	438	(38)	224	224	0.00%	0
1215	Special Education	0	0	0	0	0	0	0	1,250	100.00%	1,250
2134	Health	0	0	0	0	0	0	200	0	-100.00%	(200)
2222	Library	0	0	0	0	0	0	300	300	0.00%	0
	TOTAL EQUIPMENT	0	0	0	4,050	3,542	508	724	6,468	793.37%	5,744
5798	Supervision District	0	0	0	0	0	(0)	0	0	100.00%	0
TOTAL PROPERTY		0	0	0	4,050	3,542	508	724	6,468	793.37%	5,744
OBJECT 800 - OTHER OBJECTS:											
5810	Dues & Fees										
2134	Health/Nurse	141	0	141	145	0	145	145	148	2.07%	3
2222	Library	162	30	132	232	30	202	202	205	1.49%	3
2410	School Dues: Institutional Membership	3,303	3,204	99	3,303	3,259	44	3,303	3,548	7.42%	245
	TOTAL DUES & FEES	3,606	3,234	372	3,680	3,289	391	3,650	3,901	6.88%	251
5898	Supervision District	1,367	1,367	0	1,397	1,254	143	1,470	1,561	6.21%	91
TOTAL OTHER OBJECTS		4,973	4,601	372	5,077	4,543	534	5,120	5,462	6.68%	342
	TOTAL	5,577,805	5,490,955	86,850	5,689,512	5,576,717	112,795	5,814,047	6,253,488	7.56%	439,441
	Additional Appropriation							152,198			
	GRAND TOTAL	5,577,805	5,490,955	86,850	5,689,512	5,576,717	112,795	5,966,245	6,253,488	4.81%	287,243

Deep River Elementary School
Requested Budget for School Year 2024-2025

DEEP RIVER ELEMENTARY STAFFING ANALYSIS

<u>Position</u>	<u>Description</u>	<u>20-21 Approved</u>	<u>21-22 Approved</u>	<u>22-23 Approved</u>	<u>23-24 Approved</u>	<u>24-25 Request</u>	<u>Adjustments</u>
5111	Administrators	1.0	1.0	1.0	1.0	1.0	0.0
5113	Teachers						
	Kindergarten	2.0	2.0	2.0	2.0	2.0	0.0
	1st Grade	2.0	2.0	2.0	2.0	2.0	0.0
	2nd Grade	2.0	2.0	2.0	2.0	2.0	0.0
	3rd Grade	2.0	2.0	2.0	2.0	2.0	0.0
	4th Grade	2.0	2.0	2.0	2.0	2.0	0.0
	5th Grade	2.0	2.0	2.0	2.0	2.0	0.0
	6th Grade	2.0	2.0	2.0	2.0	2.0	0.0
	Math Coach	1.0	1.0	1.0	1.0	1.0	0.0
	Reading Consultant	1.5	1.5	1.5	1.5	1.5	0.0
	Specials (Art, Music, PE)	0.6	0.6	0.6	0.6	0.6	0.0
	Total Teachers	17.1	17.1	17.1	17.1	17.1	0.0
5114	Secretaries	2.0	2.0	2.0	2.0	2.0	0.0
5115	Custodians	3.0	3.0	3.0	3.0	3.0	0.0
5116	Nurse	1.0	1.0	1.0	1.0	1.0	0.0
5119	Para-educators / Teacher Assistant						
	Special Education	8.5	9.5	9.5	9.5	9.5	0.0
	TLC	1.9	1.9	1.9	1.9	1.9	0.0
	Kindergarten	1.2	1.2	1.2	1.2	1.2	0.0
	Total Para-educators/Teacher Asst	11.6	12.6	12.6	12.6	12.6	0.0
5124	Building Substitutes	0.0	0.0	0.0	1.0	1.0	0.0
TOTALS		35.7	36.7	36.7	37.7	37.7	0.0

Deep River Elementary School
Requested Budget for School Year 2024-2025

GRANT FUNDED

<u>Position</u>	<u>Description</u>						
5119	Para-educators / Teacher Assistant						
	Special Education	1.0	1.0	1.0	1.0	1.0	0.0
	TLC/ELL	2.5	2.5	2.5	2.5	2.5	0.0
	Psychological Services	0.0	0.0	0.5	0.5	0.0	-0.5
5124	Building Substitutes	1.0	1.0	1.0	0.0	0.0	0.0
TOTAL GRANT FUNDED		4.5	4.5	5.0	4.0	3.5	-0.5

SUPERVISION FUNDED

<u>Position</u>	<u>Description</u>						
5113	Teachers						
	Art	0.8	0.8	0.8	0.8	0.8	0.0
	Music (General & Instrumental)	1.6	1.6	1.6	1.6	1.6	0.0
	Physical Education	0.8	0.8	0.8	0.8	0.8	0.0
	FLES	0.7	0.7	0.7	0.7	0.7	0.0
	Media Specialist	1.0	1.0	1.0	1.0	1.0	0.0
	Special Education	3.5	3.5	3.5	3.5	3.5	0.0
	Speech/Language	1.0	1.0	1.0	1.0	1.0	0.0
	Social Worker	1.0	1.0	1.0	1.0	1.0	0.0
	Psychological Services	0.5	0.5	0.5	0.5	1.0	0.5
	Occupational & Physical Therapy	0.2	0.2	0.2	0.2	0.2	0.0
	Behavior Analyst (BCBA)	0.2	0.2	0.2	0.2	0.2	0.0
	Total Teachers	11.3	11.3	11.3	11.3	11.8	0.5
5119	Para-educators						
	Special Education	0.00	0.00	0.00	0.00	0.00	0.0
5120	Network Technicians	1.00	1.00	1.00	1.00	1.00	0.0
TOTAL SUPERVISION FUNDED		12.3	12.3	12.3	12.3	12.8	0.5