

**DEEP RIVER ELEMENTARY SCHOOL  
BOARD OF EDUCATION REGULAR MEETING  
DRES LIBRARY  
THURSDAY, SEPTEMBER 15, 2022 7:00pm**

**F.O.I. Compliance** – Subject to BOE approval at a future meeting

**CALL TO ORDER**

Ms. Morrissey called the meeting to order at 7:02pm.

**VERBAL ROLL CALL FOR BOE MEMBERS**

<b>Deep River BOE</b>	<b>Administration</b>
Miriam Morrissey	Brian White
Pat Maikowski	Bob Grissom
Bob Ferretti	Sarah Brzozowy
Alyson Whelan	Josh Torchia
Lenore Grunko	
Scott Hallden	
Melissa McIntyre	
<b>Absent:</b> Betsy Scholfield, Nick Rioux	

**CONSENT AGENDA**

Upon a motion duly made and seconded the Deep River Board of Education unanimously **VOTED** to amend the March 17, 2022 meeting.

**Amendment:**

The minutes should state that carpet was installed in the library.

Mr. Torchia introduced new staff at Deep River Elementary School.

Upon a motion duly made and seconded the Deep River Board of Education unanimously **VOTED** to approve the minutes from the Regular Meeting of May 19, 2022, Minutes from the Special Meeting of August 15, 2022 and the Accounts Payable report and to move the Building Study Discussion up on the agenda to accommodate the attendees.

**Presentation on Building Study Outcomes – Representatives from Drummery  
Rosane Anderson (DRA)**

Greg Smolley from DRA presented the facility needs for the Deep River Elementary school. He discussed the short term and long term facility needs. The site is nicely maintained. Mr. Smolley answered Board questions. Next steps will be to update enrollment projections and to get this information to all three towns for Capital Plan planning.

**PUBLIC COMMENT**

No Comment

## **REPORTS and OTHER ITEMS**

### **Superintendent's Report**

#### **District Update**

The opening of school went smoothly. Kids and staff are happy to be back in school. Cameras have been installed on the buses. First Student has been very supportive of this. The drivers are concerned about student safety. Driver training has been done. Reporting will be given to the district from First Student in the event of an infraction. Reported cases of COVID will be tracked by a data tracker and will be available on the website. This is updated weekly. A Board of Education retreat is scheduled for September 24, 2022 at 9:00am at the John Winthrop Library to discuss strategic planning goals.

#### **Information and Communication**

Five contracts will be negotiated this year. Cafeteria workers, Region 4 secretary and nurses and certified employees will be negotiated this fall. A three year contract is expected. Para-educators and network techs will be negotiated in the spring.

Mr. White gave an update on security. A firm will be secured to do a security audit. Practices will also be reviewed so there is consistency in all five buildings. Safety drills have occurred in all schools. A technology audit will occur later in the year. Free school lunch will be extended thru November.

### **Assistant Superintendent's Report S. Brzozowy**

#### **General Update**

It was great to see staff and the kids coming back to school. A survey of the staff was conducted regarding the opening of school and there was an overwhelming positive response to the start of school.

#### **Financial Status Updates**

##### **Current Year to Date Financial Status Update**

Mr. Grissom gave an update on the financial status. The FY21-22 status update was discussed. Last year's financials are closed. There is a small surplus of approximately \$84,833. The audit is being completed. Current year reporting is prepared through the end of August. There is no concern at this time of meeting the financial needs of the district.

##### **Cafeteria Fund Update**

FY21-22 revenues were from federal monies received from the Seamless Summer option. Families who need this service will need to apply for it.

##### **Medical Reserve Tracking**

Net favorable results have been realized last year. The reserve is funded adequately.

**Grants**

ESSER III funds were used to fund reading and math intervention and a school psychologist. Funding will also be provided for a certified substitute teacher during the winter months.

**Discussion and Possible VOTE to Approve transfer as presented (Enclosure 9)**

Upon a motion made by Pat Maikowski and seconded by Lenore Grunko the Deep River Elementary School unanimously **VOTED** to approve the transfer as presented by the Business Manager.

**Principal's Update**

Mr. Torchia gave a brief report. The opening of school went smoothly. Open house was held and parent teacher conferences will occur in the coming weeks.

**Committee Reports****Finance**

Next Meeting October 19, 2022

**Curriculum**

Next Meeting October 18, 2022

**Policy**

Next Meeting October 20, 2022

**Supervision District:**

Meeting held at the next Joint Board of Education meeting.

**Other Committee Reports****LEARN Committee Report**

No report at this time.

**Discussion regarding Pending Policies**

No Policies to discuss

**Facilities**

The roof is complete. The library is finished. Painting will be done over a vacation period. Flooring options are being reviewed for the ramp and the gym lobby. A group of community members met to discuss the playground. If the order is placed by November 1st the playground will be discounted 50%. Storage will be needed until equipment can be installed in the spring.

**Other Items****Presentation on Building Study Outcomes – Representatives from Drummery****Rosane Anderson (DRA)**

Discussion moved up in the agenda.

**PUBLIC COMMENT**

No Comment

**FUTURE AGENDA ITEMS**

- 7.1 Joint BOE Retreat September 24, 2022 @ 9:00am at JWMS
- 7.2 Joint BOE Meeting October 6, 2022 @ 7:00pm
- 9.2 Deep River BOE Meeting next Regular is November 17, 2022 @ 7:00pm

**ADJOURNMENT**

On motion duly made and seconded the Board unanimously **VOTED** to adjourn at 8:33pm.

Respectfully Submitted,

Kelley Frazier, Secretary



# The Schools of Chester, Deep River, Essex, and Region 4

COMMITTED TO EXCELLENCE

SCHOOL FACILITIES PHYSICAL –  
CONDITIONS ASSESSENT

**Deep River Elementary School**

15 September 2022

DRA

# The Schools of Chester, Deep River, Essex and Region 4

DISTRICT  
OFFICES



**RSD #4**

Winthrop Road, Deep River

ELEMENTARY  
SCHOOLS



**Deep River Elementary School | K - 6**

12 River Street, Deep River



**Chester Elementary School | K - 6**

23 Ridge Road, Chester



**Essex Elementary School | PK - 6**

108 Main Street, Centerbrook

MIDDLE  
SCHOOL



**John Winthrop Middle School | 7 - 8**

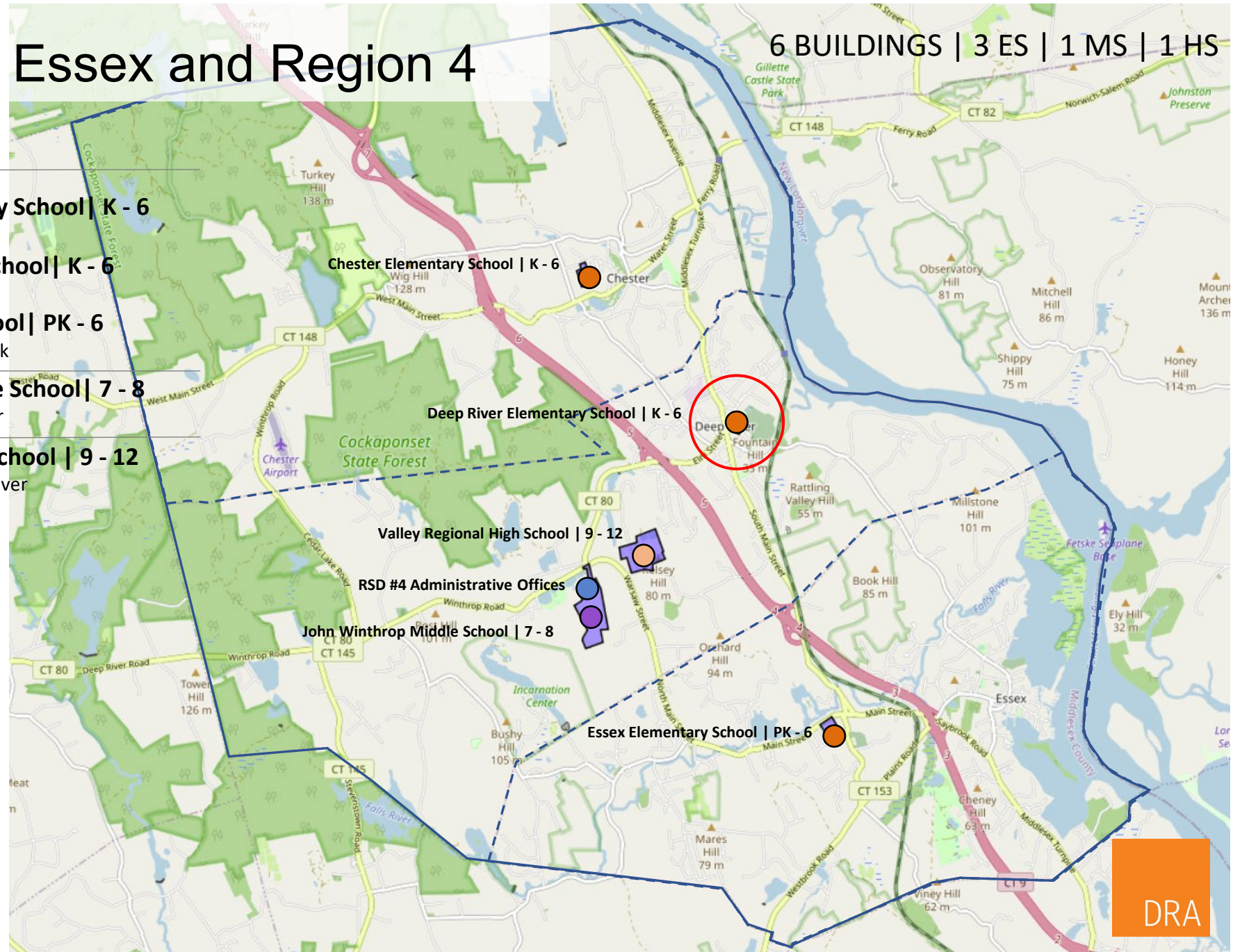
1 Winthrop Road, Deep River

HIGH  
SCHOOL

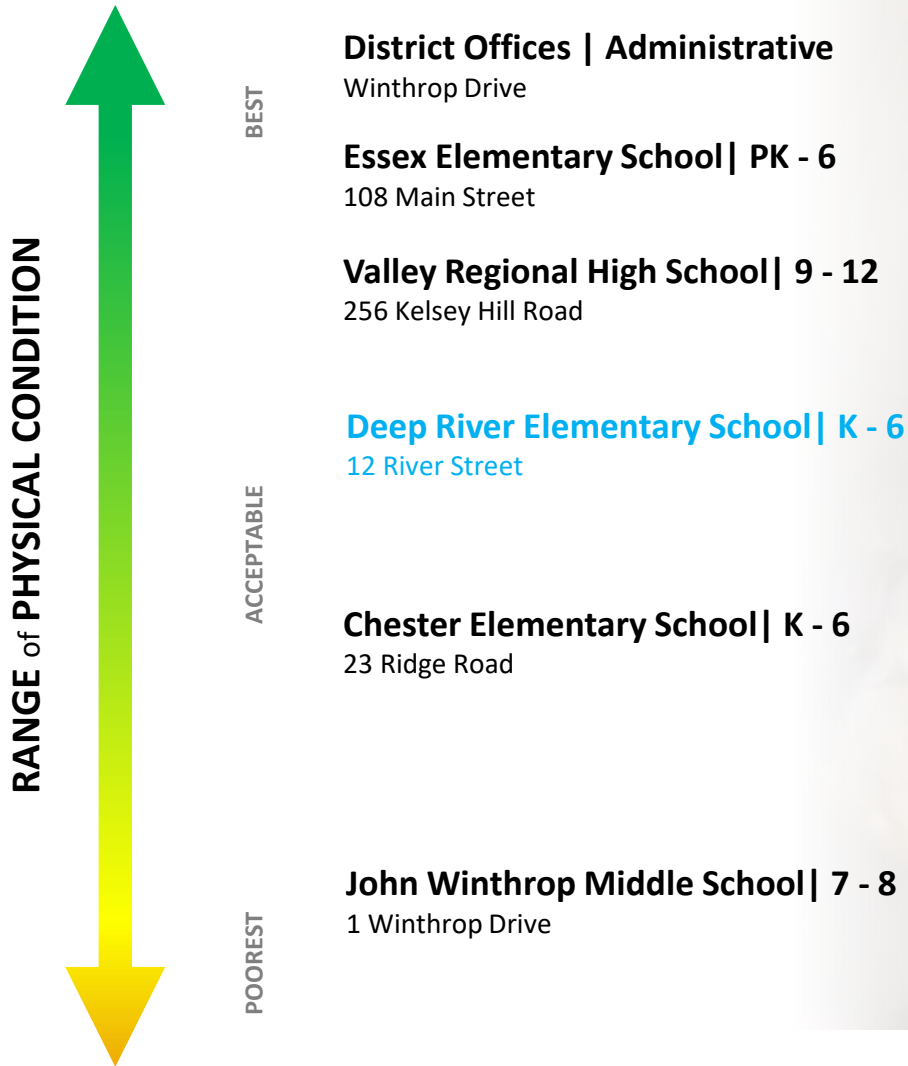


**Valley Regional High School | 9 - 12**

256 Kelsey Hill Road, Deep River



# Physical Conditions Assessment





# Facilities Assessment – Deep River Elementary School





# Facilities Assessment – Deep River Elementary School



The image displays three architectural floor plans for a school building, labeled Lower Level, Main Level, and Upper Level. Each plan is color-coded and includes room labels and area measurements. Red arrows point from a legend box to specific rooms on each level.

**Legend:**

- Storage
- Mechanical
- Cafeteria
- Kitchen
- Music Room / Stage
- Gymnasium
- Classrooms
- Library
- Main Office
- Classrooms

**Lower Level:**

- Rooms include: 100 (1000 sf), 101 (1000 sf), 102 (1000 sf), 103 (1000 sf), 104 (1000 sf), 105 (1000 sf), 106 (1000 sf), 107 (1000 sf), 108 (1000 sf), 109 (1000 sf), 110 (1000 sf), 111 (1000 sf), 112 (1000 sf), 113 (1000 sf), 114 (1000 sf), 115 (1000 sf), 116 (1000 sf), 117 (1000 sf), 118 (1000 sf), 119 (1000 sf), 120 (1000 sf), 121 (1000 sf), 122 (1000 sf), 123 (1000 sf), 124 (1000 sf), 125 (1000 sf), 126 (1000 sf), 127 (1000 sf), 128 (1000 sf), 129 (1000 sf), 130 (1000 sf), 131 (1000 sf), 132 (1000 sf), 133 (1000 sf), 134 (1000 sf), 135 (1000 sf), 136 (1000 sf), 137 (1000 sf), 138 (1000 sf), 139 (1000 sf), 140 (1000 sf), 141 (1000 sf), 142 (1000 sf), 143 (1000 sf), 144 (1000 sf), 145 (1000 sf), 146 (1000 sf), 147 (1000 sf), 148 (1000 sf), 149 (1000 sf), 150 (1000 sf), 151 (1000 sf), 152 (1000 sf), 153 (1000 sf), 154 (1000 sf), 155 (1000 sf), 156 (1000 sf), 157 (1000 sf), 158 (1000 sf), 159 (1000 sf), 160 (1000 sf), 161 (1000 sf), 162 (1000 sf), 163 (1000 sf), 164 (1000 sf), 165 (1000 sf), 166 (1000 sf), 167 (1000 sf), 168 (1000 sf), 169 (1000 sf), 170 (1000 sf), 171 (1000 sf), 172 (1000 sf), 173 (1000 sf), 174 (1000 sf), 175 (1000 sf), 176 (1000 sf), 177 (1000 sf), 178 (1000 sf), 179 (1000 sf), 180 (1000 sf), 181 (1000 sf), 182 (1000 sf), 183 (1000 sf), 184 (1000 sf), 185 (1000 sf), 186 (1000 sf), 187 (1000 sf), 188 (1000 sf), 189 (1000 sf), 190 (1000 sf), 191 (1000 sf), 192 (1000 sf), 193 (1000 sf), 194 (1000 sf), 195 (1000 sf), 196 (1000 sf), 197 (1000 sf), 198 (1000 sf), 199 (1000 sf), 200 (1000 sf), 201 (1000 sf), 202 (1000 sf), 203 (1000 sf), 204 (1000 sf), 205 (1000 sf), 206 (1000 sf), 207 (1000 sf), 208 (1000 sf), 209 (1000 sf), 210 (1000 sf), 211 (1000 sf), 212 (1000 sf), 213 (1000 sf), 214 (1000 sf), 215 (1000 sf), 216 (1000 sf), 217 (1000 sf), 218 (1000 sf), 219 (1000 sf), 220 (1000 sf), 221 (1000 sf), 222 (1000 sf), 223 (1000 sf), 224 (1000 sf), 225 (1000 sf), 226 (1000 sf), 227 (1000 sf), 228 (1000 sf), 229 (1000 sf), 230 (1000 sf), 231 (1000 sf), 232 (1000 sf), 233 (1000 sf), 234 (1000 sf), 235 (1000 sf), 236 (1000 sf), 237 (1000 sf), 238 (1000 sf), 239 (1000 sf), 240 (1000 sf), 241 (1000 sf), 242 (1000 sf), 243 (1000 sf), 244 (1000 sf), 245 (1000 sf), 246 (1000 sf), 247 (1000 sf), 248 (1000 sf), 249 (1000 sf), 250 (1000 sf), 251 (1000 sf), 252 (1000 sf), 253 (1000 sf), 254 (1000 sf), 255 (1000 sf), 256 (1000 sf), 257 (1000 sf), 258 (1000 sf), 259 (1000 sf), 260 (1000 sf), 261 (1000 sf), 262 (1000 sf), 263 (1000 sf), 264 (1000 sf), 265 (1000 sf), 266 (1000 sf), 267 (1000 sf), 268 (1000 sf), 269 (1000 sf), 270 (1000 sf), 271 (1000 sf), 272 (1000 sf), 273 (1000 sf), 274 (1000 sf), 275 (1000 sf), 276 (1000 sf), 277 (1000 sf), 278 (1000 sf), 279 (1000 sf), 280 (1000 sf), 281 (1000 sf), 282 (1000 sf), 283 (1000 sf), 284 (1000 sf), 285 (1000 sf), 286 (1000 sf), 287 (1000 sf), 288 (1000 sf), 289 (1000 sf), 290 (1000 sf), 291 (1000 sf), 292 (1000 sf), 293 (1000 sf), 294 (1000 sf), 295 (1000 sf), 296 (1000 sf), 297 (1000 sf), 298 (1000 sf), 299 (1000 sf), 300 (1000 sf), 301 (1000 sf), 302 (1000 sf), 303 (1000 sf), 304 (1000 sf), 305 (1000 sf), 306 (1000 sf), 307 (1000 sf), 308 (1000 sf), 309 (1000 sf), 310 (1000 sf), 311 (1000 sf), 312 (1000 sf), 313 (1000 sf), 314 (1000 sf), 315 (1000 sf), 316 (1000 sf), 317 (1000 sf), 318 (1000 sf), 319 (1000 sf), 320 (1000 sf), 321 (1000 sf), 322 (1000 sf), 323 (1000 sf), 324 (1000 sf), 325 (1000 sf), 326 (1000 sf), 327 (1000 sf), 328 (1000 sf), 329 (1000 sf), 330 (1000 sf), 331 (1000 sf), 332 (1000 sf), 333 (1000 sf), 334 (1000 sf), 335 (1000 sf), 336 (1000 sf), 337 (1000 sf), 338 (1000 sf), 339 (1000 sf), 340 (1000 sf), 341 (1000 sf), 342 (1000 sf), 343 (1000 sf), 344 (1000 sf), 345 (1000 sf), 346 (1000 sf), 347 (1000 sf), 348 (1000 sf), 349 (1000 sf), 350 (1000 sf), 351 (1000 sf), 352 (1000 sf), 353 (1000 sf), 354 (1000 sf), 355 (1000 sf), 356 (1000 sf), 357 (1000 sf), 358 (1000 sf), 359 (1000 sf), 360 (1000 sf), 361 (1000 sf), 362 (1000 sf), 363 (1000 sf), 364 (1000 sf), 365 (1000 sf), 366 (1000 sf), 367 (1000 sf), 368 (1000 sf), 369 (1000 sf), 370 (1000 sf), 371 (1000 sf), 372 (1000 sf), 373 (1000 sf), 374 (1000 sf), 375 (1000 sf), 376 (1000 sf), 377 (1000 sf), 378 (1000 sf), 379 (1000 sf), 380 (1000 sf), 381 (1000 sf), 382 (1000 sf), 383 (1000 sf), 384 (1000 sf), 385 (1000 sf), 386 (1000 sf), 387 (1000 sf), 388 (1000 sf), 389 (1000 sf), 390 (1000 sf), 391 (1000 sf), 392 (1000 sf), 393 (1000 sf), 394 (1000 sf), 395 (1000 sf), 396 (1000 sf), 397 (1000 sf), 398 (1000 sf), 399 (1000 sf), 400 (1000 sf), 401 (1000 sf), 402 (1000 sf), 403 (1000 sf), 404 (1000 sf), 405 (1000 sf), 406 (1000 sf), 407 (1000 sf), 408 (1000 sf), 409 (1000 sf), 410 (1000 sf), 411 (1000 sf), 412 (1000 sf), 413 (1000 sf), 414 (1000 sf), 415 (1000 sf), 416 (1000 sf), 417 (1000 sf), 418 (1000 sf), 419 (1000 sf), 420 (1000 sf), 421 (1000 sf), 422 (1000 sf), 423 (1000 sf), 424 (1000 sf), 425 (1000 sf), 426 (1000 sf), 427 (1000 sf), 428 (1000 sf), 429 (1000 sf), 430 (1000 sf), 431 (1000 sf), 432 (1000 sf), 433 (1000 sf), 434 (1000 sf), 435 (1000 sf), 436 (1000 sf), 437 (1000 sf), 438 (1000 sf), 439 (1000 sf), 440 (1000 sf), 441 (1000 sf), 442 (1000 sf), 443 (1000 sf), 444 (1000 sf), 445 (1000 sf), 446 (1000 sf), 447 (1000 sf), 448 (1000 sf), 449 (1000 sf), 450 (1000 sf), 451 (1000 sf),

DRA



## *Assessment Summary*

- The building is in overall good condition
- Boilers recently replaced
- Air handling equipment should be addressed
- ADA compliance issues need to be addressed
- Windows need to be replaced in some areas
- Considerable investment projected for 2030 - 2035

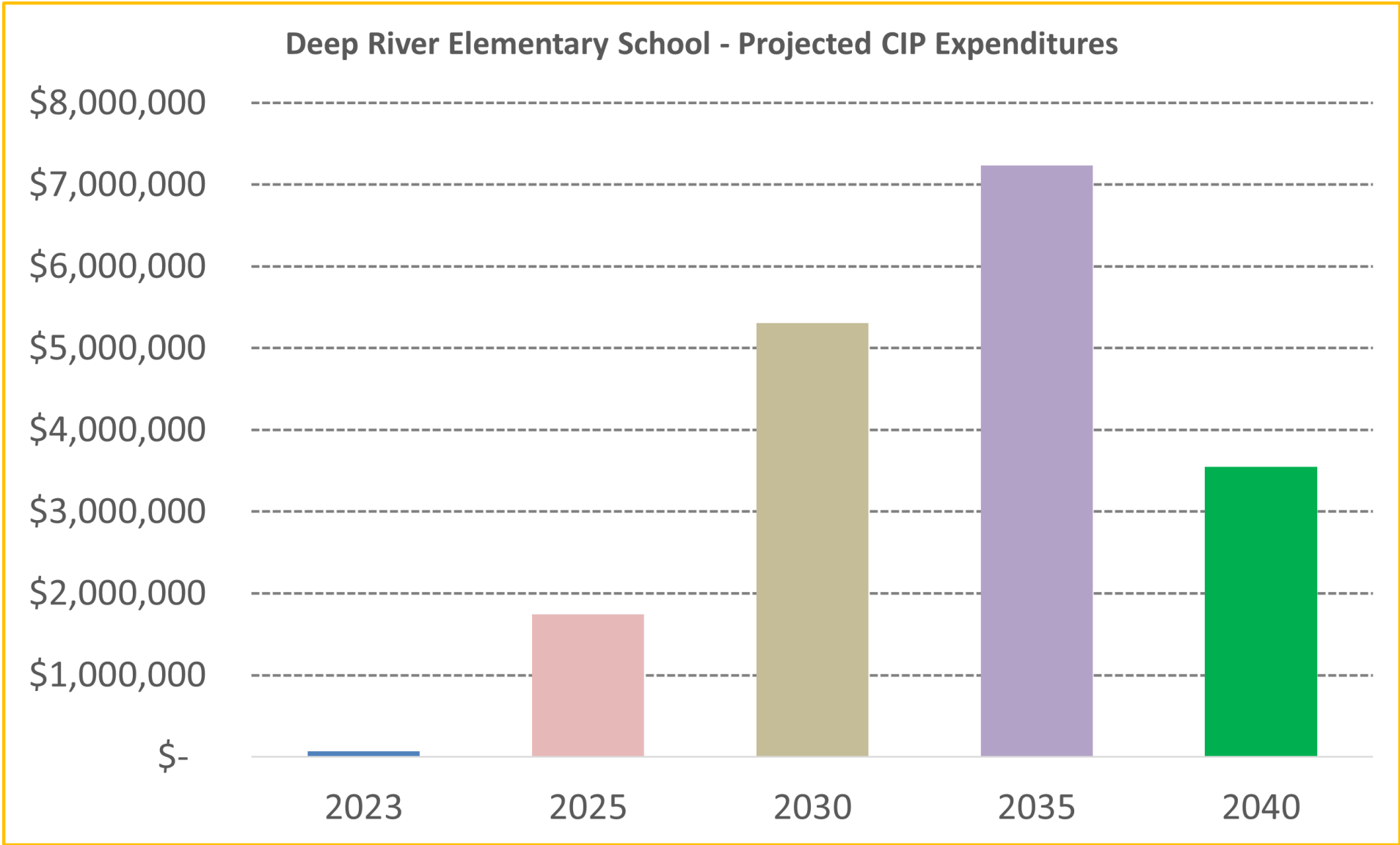
# Facilities Assessment – Deep River Elementary School

## *Large Cost Items*

- 2023
  - Playscape safety and ADA compliance
- 2030
  - Air Conditioning, Windows
- 2035
  - Mechanical, Electrical, Brick Repointing



# Facilities Assessment – Deep River Elementary School



2023: \$68,750

2025: \$1,741,538

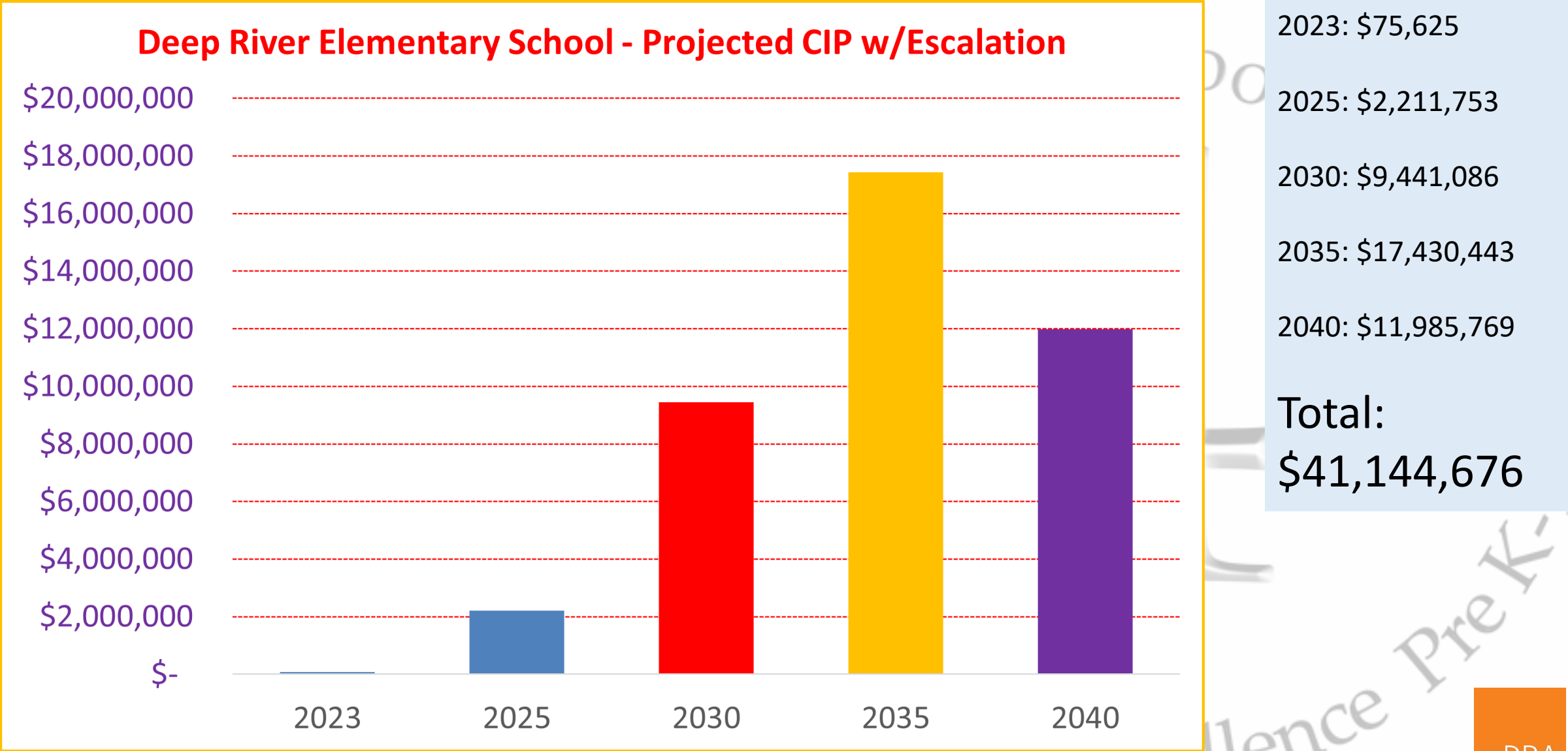
2030: \$5,303,981

2035: \$7,232,549

2040: \$3,546,085

**Total:**  
**\$17,892,903**

# Facilities Assessment – Deep River Elementary School



# Facilities Assessment – Deep River Elementary School

Grade Configuration:

K - 6

PROJECTED STUDENT ENROLLMENT	Students	# Inst. Areas		Students	# Inst. Areas
8-Year Highest Projected Enrollment	8-Year	25		8-Year	25
Pre-Kindergarten	0	0.00	Grade 6	36	1.66
Kindergarten	31	1.24	Grade 7		0.00
Grade 1	32	1.28	Grade 8		0.00
Grade 2	21	0.84	Grade 9		0.00
Grade 3	29	1.16	Grade 10		0.00
Grade 4	28	1.12	Grade 11		0.00
Grade 5	24	0.96	Grade 12		0.00
<b>Total Student Enrollment</b>				<b>201</b>	<b>8.26</b>

# Facilities Assessment – Deep River Elementary School

REIMBURSEABLE SQUARE FOOTAGE	Students	SF/student	Total	SF/Student Range
SF/Student - Elementary School	165	125.00	20,625	104-125
SF/Student - Middle School	36	151.00	5,436	119-151
SF/ Student - High School	0			163-187
<b>Maximum Reimbursable Gross Square Feet</b>			<b>26,061</b>	

PROGRAM AREAS	New	Exist SF	Total SF	# Instr Area
Academic Core	0	18,528	18,528	28
Special Education	0	260	260	
Administration	0	2,013	2,013	
Media Center	0	2,114	2,114	
Visual Arts	0	935	935	1
Music	0	0	0	0
Performing Arts / Auditorium	0	1,002	1,002	0
Life Skills/Tech/Bus Education	0	0	0	0
Physical Education	0	5,085	5,085	0
Student Dining	0	3,205	3,205	
Food Service	0	920	920	
Custodial	0	0	0	
<b>Subtotal - Net Square Feet</b>	<b>0</b>	<b>34,062</b>	<b>34,062</b>	<b>29</b>
Building Services	0	11,473	11,473	
<b>Subtotal - Net SF including Building Service</b>	<b>0</b>	<b>45,535</b>	<b>45,535</b>	

Construction Factor	0.11	0.11	0.16
<b>Total Gross SF Programmed - Funded</b>	<b>0</b>	<b>50,544</b>	<b>52,722</b>

The difference between existing building and OSCG&R Space Guidelines is 26,661 square feet

# Facilities Assessment – Deep River Elementary School





# Facilities Assessment – Deep River Elementary School





# Facilities Assessment – Deep River Elementary School





# Facilities Assessment – Deep River Elementary School





# Facilities Assessment – Deep River Elementary School

CPSI  
On this page  
you will find  
Level: 2



- Swings – no concerns with hardware
- Noted several areas with exposed concrete – this must be addressed immediately – the concrete was not installed correctly
- Noted exposed fabric – suggesting rubber tiles – placed on top of 12" compacted surfacing
- Safe ones – for an 8' high arc – need 192" (discovered 185" and 180") – can adjust height cross bar to be closer to 7'6" – then adjust height of seats (min 12" above surfacing) – This is a level 3

# Facilities Assessment – Deep River Elementary School

CPSI  
On this page  
you will find  
Level: 3



- Has mfg and general Age signage – did not note Heat or Drawstring signage



- Surfacing – noted depth only at +/- 6" (should be 12" compacted – 9" compacted minimal) – installed on fabric (no drainage stone noted)
- Entire area needs min 6" of surfacing





# Facilities Assessment – Deep River Elementary School





# Facilities Assessment – Deep River Elementary School





# Facilities Assessment – Deep River Elementary School



# Facilities Assessment – Deep River Elementary School





# Facilities Assessment – Deep River Elementary School





# Facilities Assessment – Deep River Elementary School





# Facilities Assessment – Deep River Elementary School



# Facilities Assessment – Deep River Elementary School





# Facilities Assessment – Deep River Elementary School



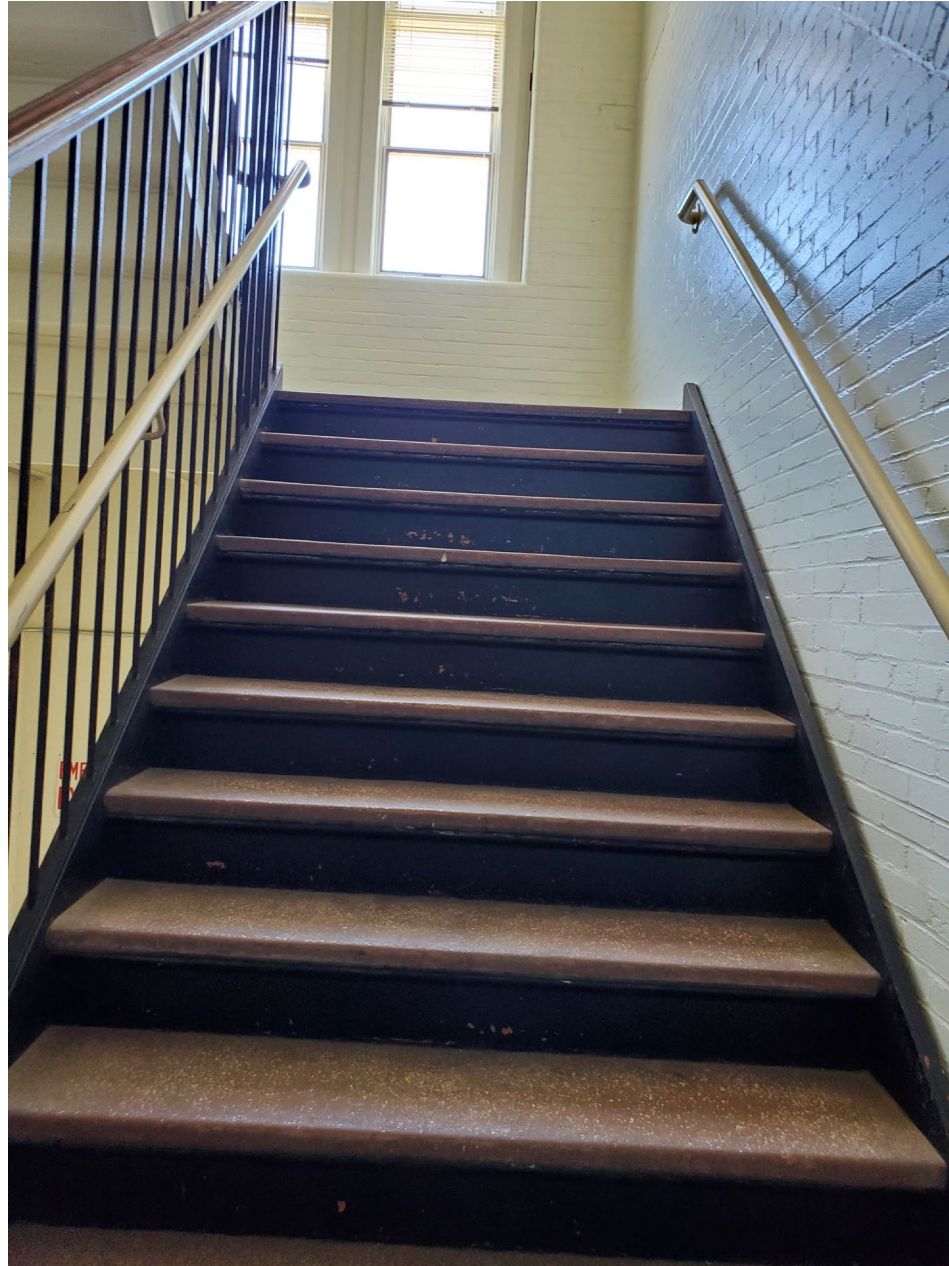


# Facilities Assessment – Deep River Elementary School





# Facilities Assessment – Deep River Elementary School





# Facilities Assessment – Deep River Elementary School





# Facilities Assessment – Deep River Elementary School



# The Schools of Chester, Deep River, Essex, and Region 4

COMMITTED TO EXCELLENCE

SCHOOL FACILITIES PHYSICAL –  
CONDITIONS ASSESSENT

**Deep River Elementary School**

15 September 2022

DRA



DRA